

# Corrales Siphon Update

April 11<sup>th</sup>, 2022

Middle Rio Grande Conservancy District

Prepared by:  
MRGCD Engineering & Mapping Department

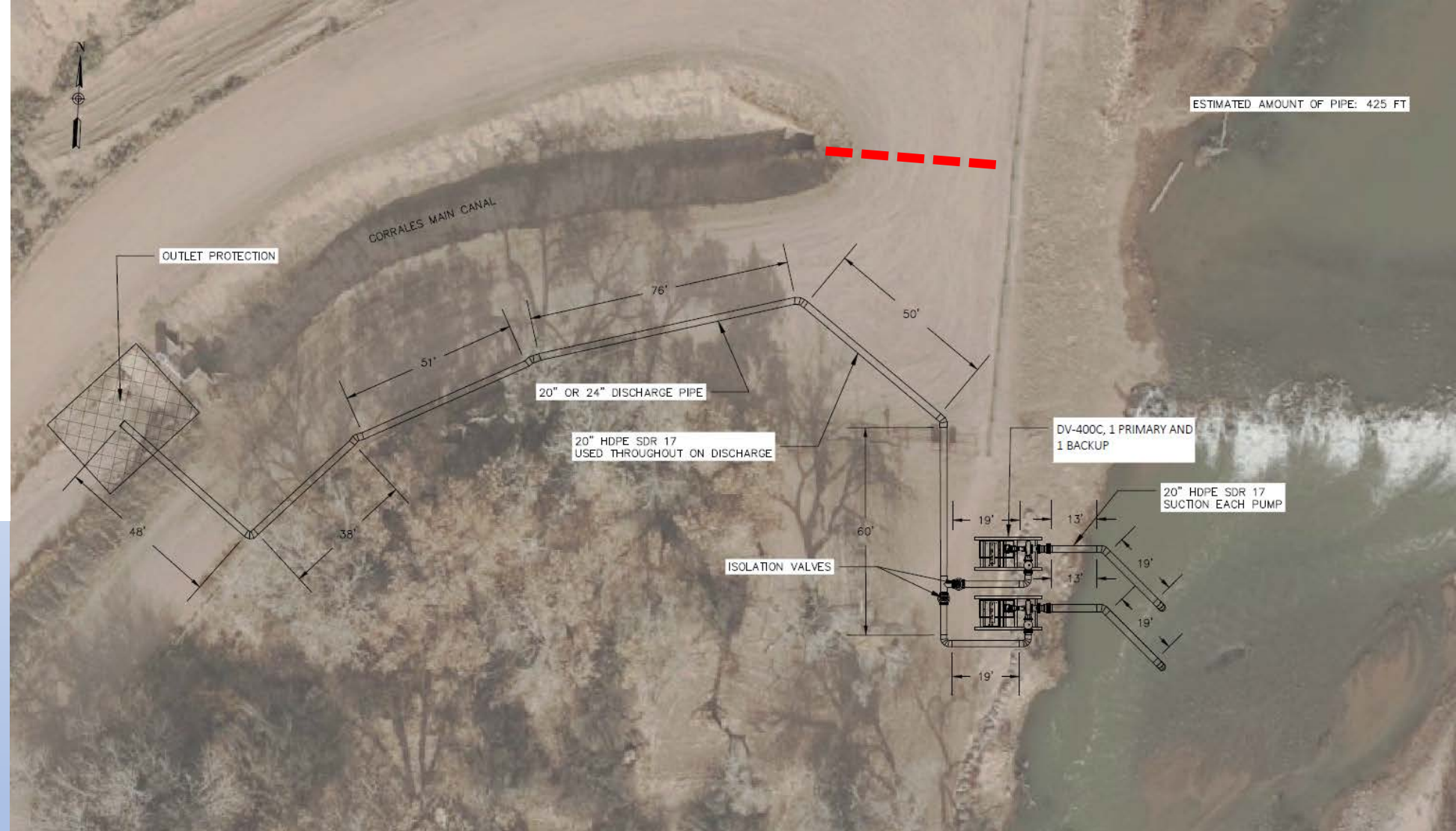






# Temporary Water Supply

- Diesel Pumps: (2) pumps 15 -20cfs capacity
- Operating cycles still being worked out
- Minnow Egg Monitoring: May 1 start















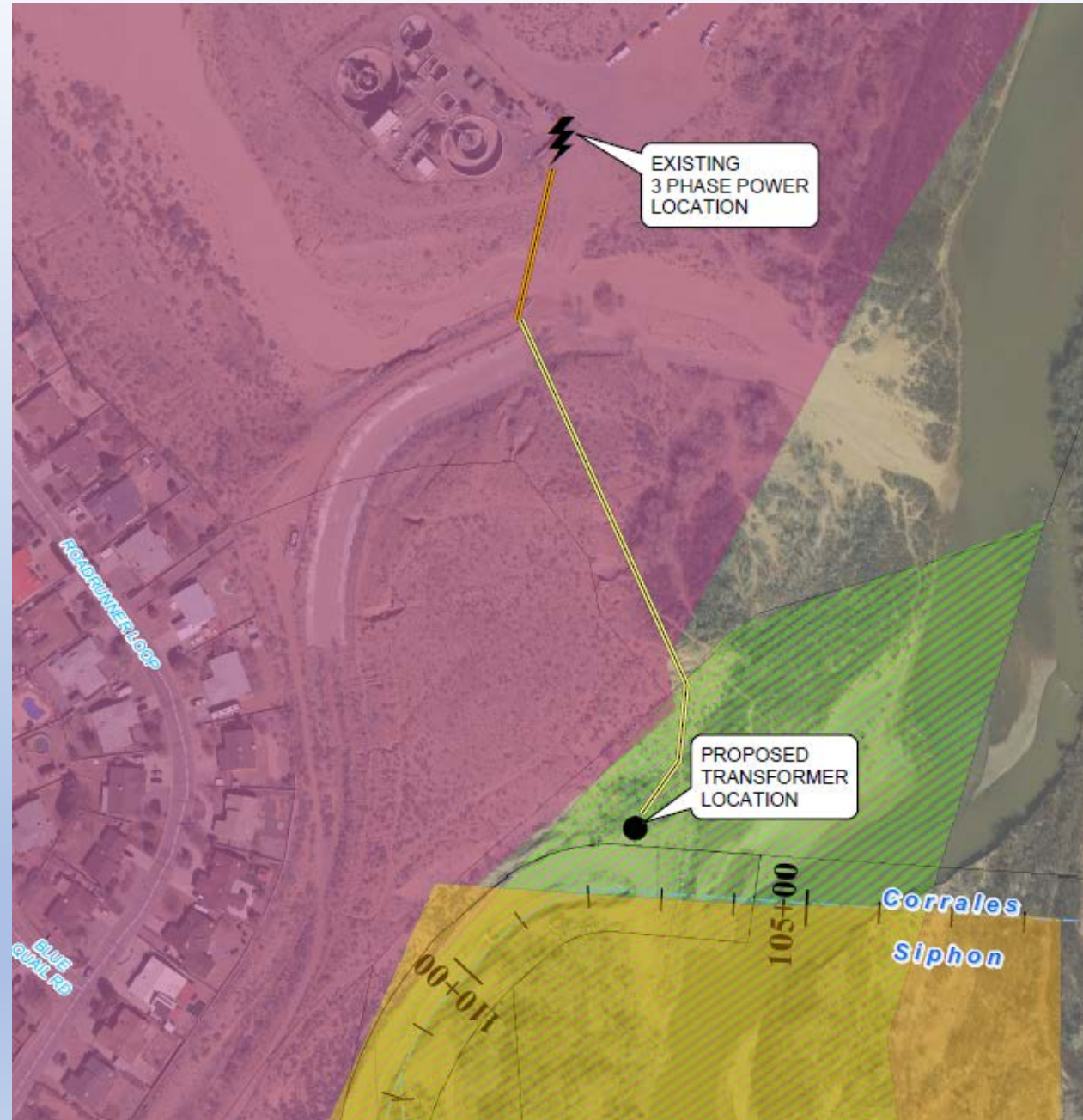
















# Questions