

Notice of Bosque Restrictions

For the purpose of public safety, the Middle Rio Grande Conservancy District (MRGCD) is limiting access of the levee road traffic gates on the north and southwest sides of NM Highway 6 to official use only. The MRGCD has partnered with the New Mexico Department of Transportation (NMDOT) and the Village of Los Lunas (Village) on several projects providing community benefits, including bridge construction and wastewater treatment plant improvements. The NMDOT and the Village support the restriction of access gates and closure of MRGCD Bosque property in the vicinity of these projects for the duration of construction. Per MRGCD Rule No. 32- Bosque Access Policy 2.1, the Bosque may be closed with little or no notice. We apologize for the inconvenience. Please contact the MRGCD or the Village Open Space Department for more information on area closures.

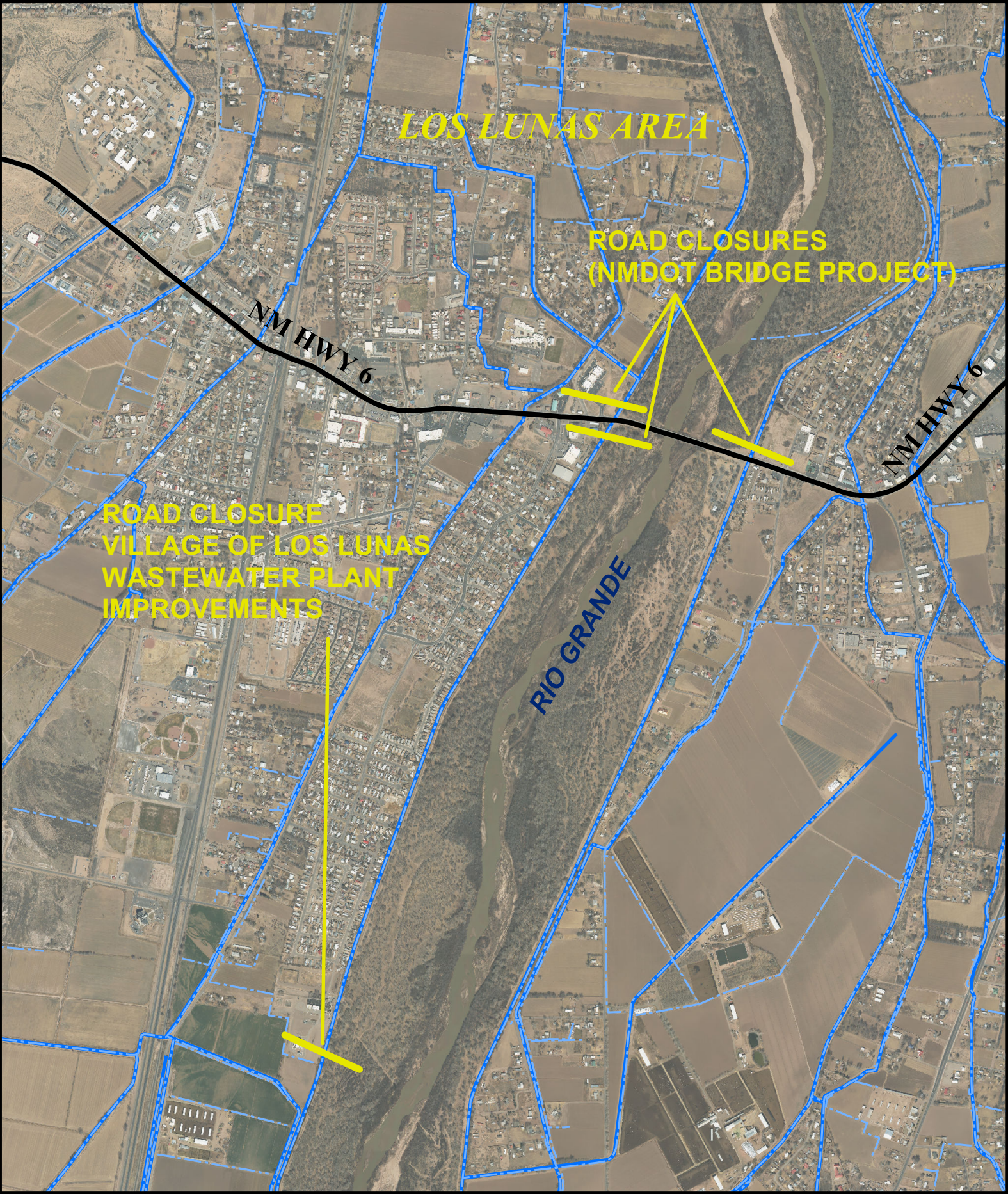


EXHIBIT "A" (SUBJECT TO CHANGE)

